

WE ARE DELTA® COMMERCIAL





WITH ROOTS GOING BACK OVER 100 YEARS...

HEALTHCARE



PUBLIC FACILITIES



THE DELTA® COMMERCIAL NAME IS SYNONYMOUS WITH HIGHLY RELIABLE PRODUCTS AND EXCEPTIONAL SERVICE

Delta® Commercial has made reliable plumbing products for the hospitals where our families receive medical attention, the arenas where we cheer and the offices where we come together to build the future. Evolving alongside the commercial plumbing industry, some things haven't changed: dependable quality, uncompromising customer service and advanced technology. **Delta® Commercial: always has, always will.**

EDUCATION



OFFICE



INNOVATIVE SOLUTIONS

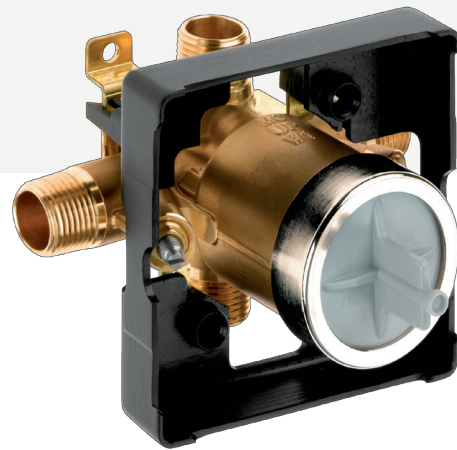
From the beginning, Delta® Commercial has sought out innovative solutions to help people use water in better ways. These smart features, found across our offerings, are helping to improve the lives of more people every day.

MULTICHOICE® UNIVERSAL VALVE

One Rough. Unlimited Possibilities

Installing the MultiChoice® Universal Valve first makes it easier to change style, finish and functionality later. Because there's no need to alter plumbing behind the wall, you can save time, effort and money on mid-construction changes and renovation updates.

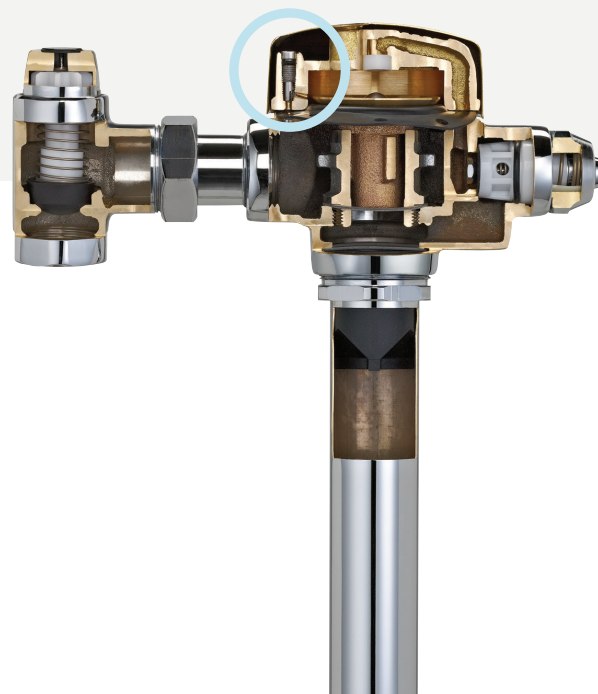
Purchasing roughs and trims separately allows you to order and install what you need, when you need it.



EZ ADJUST® SYSTEM

Fine Tune Flush Volume

With a simple turn of an external adjustment screw you can set or fine tune flush volumes. There is no need to turn off water supply lines or replace internal parts, such as the diaphragm, to adjust flow rates. EZ Adjust® Technology allows Delta® Commercial flush valves to have a consistent performance on a broad assortment of fixtures in a variety of public areas.



PROXIMITY® SENSING TECHNOLOGY

Entire Faucet Acts As a Sensor

With Proximity® Sensing Technology, the entire faucet body acts as a sensor, activating water flow when hands approach and stopping once hands are removed. They are designed for tough conditions and busy facilities such as hospitals and schools, that require hands-free operation, vandal resistance, reliable operations and ease of maintenance. The technology responds extremely fast regardless of lighting, reflections or direction of approach.

The simple-to-program controller provides advanced features including line rinse options, metering mode, and a connectivity option for a 3-position switch.



H₂OPTICS® SENSING TECHNOLOGY

Consistent, Dependable Results

Delta® Commercial's H₂Optics® Sensing Technology is one of the most advanced infrared sensing technologies in the industry today for electronic faucets and flush valves. With the ability to accurately sense the user's distance, regardless of external factors such as light reflection, clothing color and texture of one's skin, H₂Optics® Technology provides consistent, dependable results.



CARTRIDGE AND HANDLE OPTIONS

Heavy Duty. Extra Strength. Long Life.

Delta® Commercial offers two interchangeable cartridge options for our 2-handle faucets. The TUF-TECK® compression cartridge is durable, long lasting and preferred by maintenance staff where there are poor water conditions. The CER-TECK® ceramic disc cartridge is the preferred choice by plumbing professionals looking for reliable quarter-turn 2-handle faucets.

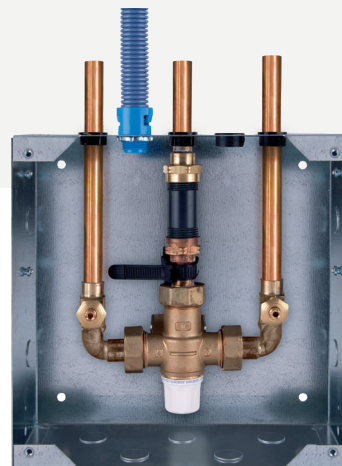


We offer a variety of handles for our two handle manual faucets including ADA and temperature indicator options. These handles are interchangeable with both TUF-TECK® and CER-TECK® cartridges.

PREASSEMBLED ELAVT LAVATORY FAUCET ROUGHS

Saving You Installation Time

Available with or without a thermostatic mixing valve, these recessed-mount roughs are pre-plumbed and factory-tested, saving you installation time. Purchasing roughs and trims separately allows you to order and install what you need, when you need it. Recessed-mount rough-ins provide additional vandal resistance in high-use school washroom facilities.



CUSTOMER SOLUTIONS

We understand the unique demands of the commercial market. Our products go beyond excellent design to incorporate smart thinking and exceptional performance that stand the test of time, even in the most challenging environments.



At Delta® Commercial innovation comes in many forms. From heavy-duty vandal-resistant products to touchless technologies that help promote cleaner environments, to products that use precious resources more efficiently - our lineup offers it all. Delta Faucet Company is proud to be an EPA WaterSense® Partner, with an ongoing commitment to developing designs which pair convenient water-saving with maximum performance.

HEALTHCARE

Discover how Delta® Commercial plumbing solutions can bring peace of mind to those working or being treated in a healthcare facility, where efficiency and cleanliness matter most. Whether it's a surgeon prepping for an early morning surgery, a nurse tending to a patient, or a medical researcher preparing experiments, they all share something in common: the need to avoid contamination.

At Delta® Commercial, we recognize that every situation has distinct requirements, and that's why we provide a diverse range of commercial plumbing products tailored for each project.



HANDS-FREE FAUCETS



- Proximity® Sensing Technology or H₂Optics® Sensing Technology
- Single-hole gooseneck faucet
- Single-hole high-rise faucet
- 4" centerset faucet
- A range of flow rates from 0.35 gpm to 2.2 gpm
- Laminar flow and smooth end options
- Wall mount /deck mount options
- Available in multiple finishes

MANUAL FAUCETS



- Lavatory, kitchen and sink faucets
- Single-hole, 4" or 8" centerset, 6"-12" widespread faucet
- Deckmount or wallmount options
- A range of flow rates from 0.35 gpm to 1.5 gpm
- CER-TECK® or TUF-TECK® cartridge options
- A range of handle options

FLUSH VALVES



- Manual or electronic flush valves
- Water closet or urinal
- Variety of flush volumes from .125 gpf to 1.6 gpf
- Fixed / adjustable
- Hardwire or battery options

SURGEON SCRUB-UP



- Deckmount or wallmount
- With foot pedal valve
- With rigid or swivel gooseneck spout
- Electronic or manual
- 1gpm or 1.5 gpm flow rate
- Smooth-end gooseneck spout option

3-POSITION SWITCH



- Designed so healthcare facilities can continue to follow infectious control procedures
- Provides option to clean sink without faucet opening
- Provides option for water lines to be flushed with high temp water

EDUCATION

Whether a new school is being built, or an existing educational facility is being renovated, a wide selection of water-delivery solutions that meet the high demands of schools, libraries, gyms and administrative buildings is a must.

At Delta® Commercial, we understand the dynamic challenges modern educational facilities face, and our products are tailored to meet these evolving needs. Trust us to deliver excellence with every one of our solutions.



HANDS-FREE FAUCETS

- H₂Optics® Sensing Technology or Proximity® Sensing Technology
- Single-hole or 3-hole faucet
- 4" or 8" centerset faucet
- Flow rate options from 0.35 gpm to 2.2 gpm
- Vandal resistant spout options



METERING FAUCETS

- 4" centerset faucet
- Single-hole faucet
- Vandal resistant lever handles
- Metering, slow-close lever handles



FLUSH VALVES

- Manual or electronic flush valves
- Water closet or urinal
- Solar option
- Variety of flush volumes from .125 gpf to 1.6 gpf
- Fixed / adjustable / dual flush
- EZ Adjust® system available on adjustable models
- Hardwire or battery options



UTILITY FAUCETS

- Two handle sink faucet
- Service sink faucet with rigid spout with top / bottom brace
- Hooded lever, blade or wrist handle options
- Adjustable or 8" center
- Hose thread outlet options
- Spout options with integrated vacuum breaker



KITCHEN FAUCETS

- Single-hole, 3-hole or 4-hole installation options
- Two handle options: hooded blade handles or lever handle
- Vandal resistant handles and aerator
- Red / blue indicators
- Diamond coated ceramic cartridge on single handle products
- CER-TECK® cartridges on two handle products

PUBLIC FACILITIES

In today's world, public facilities such as airports, stadiums, retail spaces, government buildings, and transportation hubs are home to numerous high-touch surfaces. Easily accumulating a high amount of bacteria, handrails, faucets, door handles and other high-touch surfaces can harbor a number of potential health risks. Now, more than ever, ensuring top-notch hygiene solutions in public washroom facilities is paramount.

With innovative solutions and durability you can trust, Delta® Commercial offers a wide array of plumbing products meticulously crafted to meet the rigorous demands of high-traffic public spaces.



HANDS-FREE FAUCETS



- H₂Optics® Sensing Technology or Proximity® Sensing Technology
- Single-hole or 3-hole faucet
- 4" or 8" centerset faucet
- Flow rate options from 0.35 gpm to 2.2 gpm
- Vandal resistant spout options

MANUAL FAUCETS



- 4" centerset faucet with metering
- Single handle or two handle faucet
- Two or three-hole mount
- Lever handle or two handle faucets

FLUSH VALVES



- Manual or electronic flush valves
- Water closet or urinal
- Solar option
- Variety of flush volumes from .125 gpf to 1.6 gpf
- Fixed / adjustable / dual flush
- EZ Adjust® system available on adjustable models
- Hardwire or battery options
- Chrome or Matte Black finish options

TUB & SHOWER



- Tub & shower with optional diverter for hand shower and ADA grab bar
- Manual or electronic shower trim models
- Pressure balance or thermostatic cartridges
- Red / blue indicators
- Vandal resistant metal lever handle or fluted handle

ELECTRONIC SOAP DISPENSER



- Sensor detects user's hand to automatically dispense soap
- Adjustable soap quantity with remote (order separately)
- Metal spout
- Plug-in & battery options
- Chrome or Matte Black finish options

OFFICE

In bustling corporate environments where time is of the essence, and proper hygiene solutions are critical, it's important to have cutting-edge plumbing fixtures that are designed to meet the demands of these busy spaces while maintaining a professional and appealing aesthetic.

Delta® Commercial provides reliability and efficiency for office buildings and business facilities, big and small. We offer top-tier plumbing solutions to create a hygienic and reliable environment where innovation meets style and durability.



HANDS-FREE FAUCETS

- H₂Optics® Sensing Technology or Proximity® Sensing Technology
- Single-hole or 3-hole faucet
- 4" or 8" centerset faucet
- Flow rate options from 0.35 gpm to 2.2 gpm
- Vandal resistant spout options



METERING FAUCETS

- 4" centerset faucet
- Single-hole faucet
- Vandal resistant lever handles
- Metering, slow-close lever handles



FLUSH VALVES

- Manual or electronic flush valves
- Water closet or urinal
- Solar option
- Variety of flush volumes from .125 gpf to 1.6 gpf
- Fixed / adjustable/ dual flush
- EZ Adjust® system available on adjustable models
- Hardwire or battery options
- Matte Black or Chrome finish options



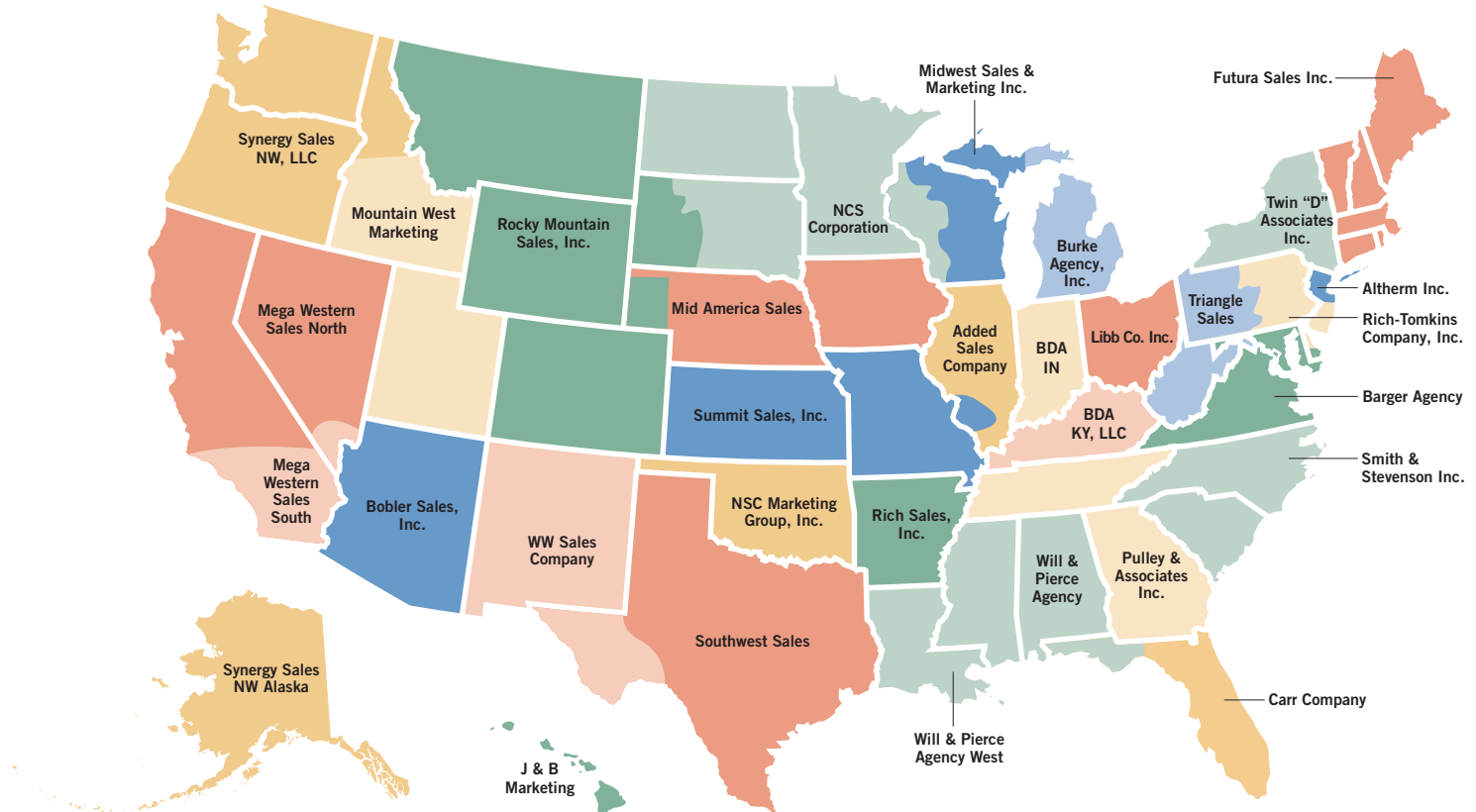
HANDS-FREE ARCHITECTURAL™ DESIGN SERIES FAUCETS

- Proximity® Sensing Technology
- Modern angular spout or high arc spout
- Adjustable sensing range, auto shut-off
- Hardwire or battery power options
- Chrome, Matte Black, Stainless Steel or Champagne Bronze finish options



UNPARALLELED SUPPORT

Delta® Commercial has presence in virtually every major city in the United States. Delta agencies are staffed nationwide with more than 400 highly experienced sales professionals who live and work in your market to meet your needs at a local level promptly and efficiently. Your local representative will assume responsibility for communication throughout the supply chain, becoming an extension of your business to ease everyday tasks and troubleshoot. Your agency is readily available to assist with customer service, stocked warranty and service parts, provisioning and training, literature and displays. This level of advanced service is brought to you only by Delta Faucet Company.



FOR MORE PRODUCT DETAILS, SCAN HERE
TO VISIT DELTAFAUCET.COM/COMMERCIAL



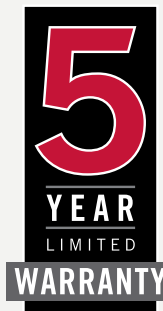
A MASCO COMPANY

Masco Canada Limited
350 S. Edgeware Rd.
St. Thomas, Ontario N5P 4L1

Delta Faucet Company
55 E. 111th St., P.O. Box 40980
Indianapolis, IN 46280

Delta® Commercial Technical Service:
877.509.2680

© 2023 Masco Canada Limited
All rights reserved.



Our five-year limited warranty on most commercial installations allows you to specify with confidence. We put our products through a strict regimen of durability testing, allowing us to stand behind them with a comprehensive warranty.