



**Single Post Supports**

- Adjustable or fixed height options
- For 1/2" - 2" copper, steel or PVC
- Nylon, UV inhibited Snap N Strut Clamp
- Freestanding or Structurally Attached

Typically used for Condensate piping



MT-1-(X)-A8  
MS-1-(X)-A10  
MS-1-(X)-A14  
MS-1-(X)-A20-MWP  
MX-1.375-(X)-SA

**Support for up to 1.5" OD**

MT-1V	Price	Price w/Pad
	\$12.00	\$14.00

**Support for 1/4" Sch. 40/80 or 3/8" Copper**

	Price	Price w/ Pad (-P)
MT-1-1216-A8	\$17.00	\$20.00
MS-1-1216-A10	\$25.00	\$27.00
MS-1-1216-A14	\$27.00	\$29.00
MS-1-1216-A20-MWP	N/A	\$52.00
MX-1.375-1216-SA	\$132.00	N/A

**Support for 1/2" Sch. 40/80 or 3/4" Copper**

	Price	Price w/ Pad (-P)
MT-1-2124-A8	\$17.00	\$20.00
MS-1-2124-A10	\$27.00	\$27.00
MS-1-2124-A14	\$29.00	\$30.00
MS-1-2124-A20-MWP	N/A	\$53.00
MX-1.375-2124-SA	\$132.00	N/A

**Support for 3/4" Sch. 40/80 or 1" Copper**

	Price	Price w/ Pad (-P)
MT-1-2529-A8	\$18.00	\$20.00
MS-1-2529-A10	\$27.00	\$29.00
MS-1-2529-A14	\$30.00	\$30.00
MS-1-2529-A20-MWP	N/A	\$53.00
MX-1.375-2529-SA	\$133.00	N/A

**Support for 1" Sch. 40/80**

	Price	Price w/ Pad (-P)
MT-1-3034-A8	\$18.00	\$21.00
MS-1-3034-A10	\$28.00	\$29.00
MS-1-3034-A14	\$30.00	\$30.00
MS-1-3034-A20-MWP	N/A	\$54.00
MX-1.375-3034-SA	\$133.00	N/A

**Support for 1-1/4" Copper**

	Price	Price w/ Pad (-P)
MT-1-3538-A8	\$18.00	\$21.00
MS-1-3538-A10	\$29.00	\$29.00
MS-1-3538-A14	\$31.00	\$31.00
MS-1-3538-A20-MWP	N/A	\$54.00
MX-1.375-3538-SA	\$133.00	N/A

**Support for 1 1/4" Sch. 40/80 or 1 1/2" Copper**

	Price	Price w/ Pad (-P)
MT-1-4044-A8	\$18.00	\$21.00
MS-1-4044-A10	\$29.00	\$29.00
MS-1-4044-A14	\$30.00	\$31.00
MS-1-4044-A20-MWP	N/A	\$54.00
MX-1.375-4044-SA	\$133.00	N/A

**Support for 1 1/2" Sch. 40/80 or 2" Copper**

	Price	Price w/ Pad (-P)
MT-1-4854-A8	\$19.00	\$21.00
MS-1-4854-A10	\$30.00	\$30.00
MS-1-4854-A14	\$31.00	\$31.00
MS-1-4854-A20-MWP	N/A	\$55.00
MX-1.375-4854-SA	\$134.00	N/A

**Support for 2" Sch. 40/80**

	Price	Price w/ Pad (-P)
MT-1-5663-A8	\$19.00	\$21.00
MS-1-5663-A10	\$30.00	\$30.00
MS-1-5663-A14	\$31.00	\$31.00
MS-1-5663-A20-MWP	N/A	\$55.00
MX-1.375-5663-SA	\$134.00	N/A

	Fixed 4"	4" - 8"	6" - 10"	10" - 14"	14" - 20"
Vertical Adjustment					
Maximum Load	75	75	75	75	75
Foot Print	34.5	34.5	54	54	54
Optional Walk Pad	MWP1010	MWP1010	MWP1212	MWP1212	MWP1212

\*\*Stainless Steel Clamps w/ Rubber Grommets are available for a limited time only  
5/8, 7/8, 1 1/8, 2 1/8



**Strut Supports**

Typically used for Conduit and Refrigeration Lines

- Aluminum Strut resists corrosion
- Stainless Steel Hardware
- Fixed and Adjustable height models
- Strut Width from 8" - 20"
- Free Standing and Structurally Attached
- Optional neoprene pad adhered to base



Select products are available for additional discounts. Please contact your local sales representative for information.

**\* New Product**

**A-Strut Series**



	Price	Price w/ Pad (-P)
* MA-6SF4	\$11.00	\$14.00
* MA-8SF4	\$15.00	\$19.00
* MA-10SF4	\$19.00	\$23.00
* MA-12SF4	\$22.00	\$28.00

Extruded aluminum design w/ integrated 1 5/8" strut. Load factor of 5lbs PSI.

**Nylon Fixed Height**



	Price	Price w/ Pad (-P)
MT-8SF4	\$17.00	\$21.00
MS-10SF4	\$19.00	\$22.00
MS-10SF6	\$21.00	\$24.00
MS-12SF4	\$23.00	\$25.00

**Nylon Low Profile Adjustable**



	Price	Price w/ Pad (-P)
MT-8SA6	\$20.00	\$23.00
MS-10SA7	\$22.00	\$25.00
MS-12SA7	\$34.00	\$37.00

**Nylon Standard Duty Adjustable**



	Price	Price w/ Pad (-P)
MS-10SA10	\$30.00	\$33.00
MS-10SA14	\$34.00	\$37.00
MS-12SA10	\$40.00	\$46.00
MS-12SA14	\$50.00	\$54.00

**Heavy Duty Stainless Steel Low Profile**



	Price
MX-12SA6	\$101.00
MX-18SA6	\$119.00
MX-20SA6	\$135.00

**Heavy Duty Stainless Steel Extended Height**



	Price
MX-12SA14	\$113.00
MX-18SA18	\$131.00
MX-20SA18	\$153.00

**Strut w/ Hanger**



	Price	Price w/ Pad (-P)
MS-2HA12	\$45.00	\$49.00
MS-3HA16	\$60.00	\$64.00
MX-2HA18	\$159.00	N/A
MX-3HA18	\$162.00	N/A
MX-4HA18	\$172.00	N/A

**Curb Series - Structurally Attached**



	Price
MX-14SA9-SA	\$243.00
MX-18SA9-SA	\$238.00

**Bridging Systems**



	Price
MAPA 2' Bridge	\$74.00
MAPA 2' Bridge w/ Pad	\$83.00
MAPA 3' Bridge	\$93.00
MAPA 3' Bridge w/ Pad	\$100.00
MAPA 6' Bridge	\$163.00
MAPA 6' Bridge w/ Pad	\$174.00

	MT-Series	MS-10 Series	MS-12 Series	MX-12 Series	MX-18 Series	MX-20 Series	Curb Series
Base Size	5X8	5X10	6X12	6X12	8X18	8X20	6X14
Maximum Load	110lbs	140lbs	165lbs	195lbs	250lbs	280lbs	250lbs
Foot Print	40	50	72	72	144	160	84
Optional Walk Pad	MWP812	MWP914	MWP1016	MWP1016	MWP1222	MWP1224	NA

Weight limits are based on contact area to roof surface with a maximum load per square inch of 5lbs. Where installation exceeds 12" refer to MAPA Products "Recommended Installation Guidelines".

**Roller Supports**

- Accommodates expansion and contraction
- Fixed and Adjustable models
- Optional neoprene pad adhered to base
- Rubber Roller with nylon bushing assembly and stainless steel shaft and hardware
- Freestanding or Structurally Attached
- Pipe Diameter up to 10"

Typically used for Gas & Mechanical Piping



Select products are available for additional discounts. Please contact your local sales representative for information.

**Nylon Fixed Height**

		Price	Price w/ Pad (-P)
	MT-2RF4	\$20.00	\$23.00
	MS-4RF3	\$24.00	\$29.00
	MS-5RF3	\$31.00	\$34.00

**Nylon Low Profile Adjustable**

		Price	Price w/ Pad (-P)
	MT-2RA6	\$22.00	\$25.00
	MS-2.5RA7	\$27.00	\$31.00
	MS-3RA7	\$31.00	\$34.00
	MS-4RA7	\$36.00	\$40.00
	MS-5RA7	\$46.00	\$50.00

**Nylon Standard Duty Adjustable**

		Price	Price w/ Pad (-P)
	MS-3RA12	\$36.00	\$39.00
	MS-4RA10	\$41.00	\$45.00
	MS-4RA14	\$48.00	\$51.00
	MS-5RA10	\$53.00	\$56.00
	MS-5RA14	\$60.00	\$65.00

**Stainless Steel Low Profile Adjustable**

		Price
	MX-5RA6	\$111.00
	MX-6RA6	\$111.00
	MX-8RA6	\$126.00
	MX-8RA6-5/8	\$141.00
	MX-10RA6	\$146.00
	MX-10RA6-5/8	\$160.00

**Heavy Duty Stainless Steel**

		Price
	MX-5RA14	\$122.00
	MX-6RA14	\$121.00
	MX-8RA18	\$140.00
	MX-8RA18-5/8	\$172.00
	MX10RA18	\$158.00
	MX-10RA18-5/8	\$190.00

**Curb Series - Structurally Attached**

		Price
	MX-5RA9-SA	\$246.00
	MX-8RA9-SA	\$250.00
	MX-10RA9-SA	\$257.00

	MT-Series	MS-3/4 Series	MS-5 Series	MX-6 Series	MX-8 Series	MX-10 Series	Curb Series
Base Size	5X8	5X10	6X12	6X14	8X18	8X20	6X14 - 6X18
Maximum Load	110lbs	140lbs	165lbs	195lbs	250lbs	280lbs	250lbs
Foot Print	40	50	72	84	144	160	84 - 108
Optional Walk Pad	MWP812	MWP914	MWP1016	MWP1020	MWP1222	MWP1224	NA

Weight limits are based on contact area to roof surface with a maximum load per square inch of 5lbs. Where installation exceeds 12" refer to MAPA Products "Recommended Installation Guidelines".



**Trapeze / Bridging Systems / Equipment Supports:**

- Heavy Duty Platform
- Sold as a base only or complete with all components
- Master Bases are 304-grade stainless steel
- Notched corners to prevent water retention, Rolled edges to prevent roof damage
- Used for heavy-duty trapeze/bridge supports, equipment and crossover/walkways
- Optional rubber walk pad
- Freestanding or structurally attached



**SS Master Base for Gas, Mechanical & Duct Trapeze Systems**



	Price
MB-815	\$94.00
MB-1416	\$120.00
MB-2020	\$160.00

**Curb Style Master Base**



	Price
MB-146C-SA	\$216.00
Add extended height 3" platform	\$54.00

**SS Bases for Equipment Platforms, Walkways & Crossover Systems**



	Price
MB-1010	\$106.00
MB-1616	\$165.00

**Fixed Height or Adjustable Equipment Supports**

(X) Available with Corner or Side bracket



	Price
MB-1010-(X):18	\$225.00
MB-1010-(X):24	\$232.00
MB-1010-(X):36	\$257.00
MB-1616-(X):18	\$287.00
MB-1616-(X):24	\$292.00
MB-1616-(X):36	\$313.92

**Corner Mounted Equipment Support**



	Price
MS-1C	\$31.00
MS-1C-P	\$34.00

Contact Manufacturer for complete quotation and submittal package

What is the support supporting?	What is the service of the item being supported?	What is the Size of the item being supported?	What is the Insulation thickness, if any?	What are the quantities of items being supported by each support?	What type of support is needed?
What is the acceptable Support Composition?	What is the necessary vertical clearance?	What is the configuration of system? Adjacent/Stacked	Is the support Free Standing or Structurally Attached?		



**New Product - Big Roller Pipe Support**

MC-R2432 Fully Assembled, designed for Large Diameter piping that will allow for thermal expansion and contraction. Included spacers prevent lateral movement. Adjustable factor of 12"

	Insulation Compression Strength	2 lb/in <sup>2</sup>	5 lb/in <sup>2</sup>	10 lb/in <sup>2</sup>	15 lb/in <sup>2</sup>	20 lb/in <sup>2</sup>
	Support Maximum Load	250 lbs	625 lbs	1250lbs	1875lbs	2500 lbs

**Standard Free Standing Non Penetrating Master Base Trapeze Supports for Duct, Gas & Hydronic Piping**

Model #	Size	Clearance	Master Base	Max Wt p/System	Price
MDS-40-38-12	32" W X 24" H	12"	MB-815-SS	500 lbs	\$458.00
MTS-24-34-12-1/4CH	4"	12"	MB-815-SS	500 lbs	\$458.00
MTS-26-38-12-1/6CH	6"	12"	MB-815-SS	500 lbs	\$475.00
MTS-28-40-12-1/8CH	8"	12"	MB-815-SS	500 lbs	\$516.00
MTS-28-34-12-2/4CH	2 - 4"	12"	MB-815-SS	500 lbs	\$475.00
MTS-32-38-12-2/6CH	2 - 6"	12"	MB-815-SS	500 lbs	\$516.00
MTS-38-42-12-2/8CH-DS	2 - 8"	12"	MB-1416-SS	1000lbs	\$653.00

**Plumbing Pedestals**

Stainless Steel shroud installs with an integral stainless steel flashing flange or optional deck cap

Installed through roof penetration and secured with an under-deck anchoring system

FP Series - 1" Supply Input, Stainless steel reservoir to contain water drained from the standpipe when turned OFF

D Series - 3/4" Supply Input, Evacuates to open drain

Yard Style - For use in landscapes where the upper and lower flanges are omitted and replaced with an anchoring collar



**MPH-24-D-24/9**  
\$1,073.00



**MPH-24-FP-24/9**  
\$1,291.00

**Options Available:**

	<b>Suffix</b>	<b>Adder</b>
Deck Cap	D	\$266.00
Double Check Back Flow Preventer	BF	\$152.00
Extended Shroud above or below roof flange (6" increments, maximum total length 6')	xx/yy	\$70.00
Yard Style (only available with "FP" Series)		<i>Contact factory for pricing</i>

**Expansion Tank Cages**



**MXC-8**  
2.0 Gallon Expansion Tank  
\$44.00

**MXC-11**  
4.0 Gallon Expansion Tank  
\$68.00





**Electrical Pedestals**

- Eliminates multiple penetrations for electrical connections to rooftop equipment
- Watertight, stainless steel shroud installs with integral stainless steel flashing flange or optional deck cap
- Installed through roof penetration and secured with an under-deck anchoring system to prevent movement within the penetration
- Optional Pedestal Assemblies: Disconnects, Starter/Disconnects/Utility Lighting and Electrical Outlet
- Pedestals furnished completely assembled with Safety Switch and wiring leads.



**Utility Pedestals**

	<b>Unit Price</b>
MPX-2-36/12 Utility Pedestal 2" - Less Disconnect	\$566.00
MPX-20G-36/12 Utility Pedestal w/ GFCI	\$641.00
MPX-20GL-36/12 Utility Pedestal w/ GFCI and Light Array	\$1,049.00
MPX-20GLS-36/12 Utility Pedestal w/ GFCI, Light Array and Switch	\$1,068.00
MPX-20L-36/12 Utility Pedestal w/ Light Array	\$874.00
MPX-20LS-36/12 Utility Pedestal w/ Light Array and Switch	\$895.00

**Options Available:**

	<b>Suffix</b>	<b>Adder</b>
Deck Cap	D	\$255.00
Extended Shroud above or below roof flange (6" increments, maximum total length 6')	xx/yy	\$48.00

**Pedestal - Less Disconnect**

MPX-4:36/12                      \$831.00  
*(available options - Deck Cap, Extended Shroud based on 30 amp)*

**Electrical Pedestal Disconnects**

**Pedestal w/ Square D Disconnects**

**240vac - fused, 2 bladed/ 2 fuse holders / 2 wire**

MPD-30:36/12	\$1,492.00
MPD-30-2X:42/12	\$2,008.00
MPD-60-2X:42/12	\$2,754.00
MPD-100-2X:48/12	\$3,250.00

**600vac - fused, 3 bladed/ 3 fuse holders / 3 wire**

MPD-30-3Z:42/12	\$3,044.00
MPD-60-3Z:42/12	\$3,144.00
MPD-100-3Z:48/12	\$4,322.00

**240vac - non-fused, 2 bladed/ 2 fuse holders / 2 wire**

MPD-30-2X-NF:42/12	\$2,069.00
MPD-60-2X-NF:42/12	\$2,826.00
MPD-100-2X-NF:48/12	\$3,478.00

**600vac - non-fused, 3 bladed/ 3 fuse holders / 3 wire**

MPD-30-3Z-NF:42/12	\$1,993.00
MPD-60-3Z-NF:42/12	\$3,289.00
MPD-100-3Z-NF:48/12	\$3,476.00

**Pedestal w/ Eaton Disconnects**

**240vac - fused, 2 bladed/ 2 fuse holders / 2 wire**

MPDE-30:36/12	\$1,476.00
MPDE-30-2X:42/12	\$1,917.00
MPDE-60-2X:42/12	\$2,854.00
MPDE-100-2X:48/12	\$2,520.00

**600vac - fused, 3 bladed/ 3 fuse holders / 3 wire**

MPDE-30-3Z:42/12	\$2,968.00
MPDE-60-3Z:42/12	\$2,974.00
MPDE-100-3Z:48/12	\$3,949.00

**240vac - non-fused, 2 bladed/ 2 fuse holders / 2 wire**

MPDE-30-2X-NF:42/12	\$1,913.00
MPDE-60-2X-NF:42/12	\$1,839.00
MPDE-100-2X-NF:48/12	\$2,639.00

**600vac - non-fused, 3 bladed/ 3 fuse holders / 3 wire**

MPDE-30-3Z-NF:42/12	\$2,554.00
MPDE-60-3Z-NF:42/12	\$3,250.00
MPDE-100-3Z-NF:48/12	\$3,246.00



**Electric Pedestals Continued**

<b>Options Available: add to base price</b>		<b>Suffix</b>	<b>Price</b>		
GFCI - Heavy Duty Commercial Receptacle w/ In Use Cover		G	\$290.00		
Lightning Surge Arrestor (3 Wire)		A	\$281.00		
Control Port		P	\$177.00		
MX-1.500-SA (priced p/each - 2 required per pedestal)			\$159.00		
45 Degree Fixed Bracket w/ Hardware (priced p/each - 4 required per pedestal)			\$82.00		
Structurally Attached Mounting Kit		SAPD	\$116.00		
<b>Options available based on Amperage</b>		<b>Suffix</b>	<b>30amp</b>	<b>60amp</b>	<b>100amp</b>
Upper Deck Cap		D	\$277.00	\$282.00	\$289.00
5' Termination Cable - Liquid tight flex conduit (3 Wire w/ Ground)		5C	\$167.00	\$242.00	\$387.00
10' Termination Cable - Liquid tight flex conduit (3 Wire w/ Ground)		10C	\$205.00	\$316.00	\$549.00
Additional Flex Conduit for Line Below Roof		BRC	\$65.00	\$91.00	N/A
Extended lengths for above or below roofline - 6" increments (Specify in model number)		xx/yy	\$76.00	\$90.00	\$114.00
Add Square D Neutral Bar Assembly		2X - 3X 3Z - 4Z	\$118.00	\$163.00	N/A
Add Eaton Neutral Bar Assembly		2X - 3X 3Z - 4Z	\$125.00	\$248.00	N/A

**Pedestal Starter-Disconnects**

<b>Square D Starter-Disconnects</b>		<b>Eaton Starter-Disconnects</b>	
<b>Single Speed, 240V, Fused, Nema 3R Enclosures, W/O Panel Switch</b>			
MPSD-30-R:52/12	\$5,044.00	MPSDE-30-R:52/12	\$5,534.00
MPSD-60-R:52/12	\$7,631.00	MPSDE-60-R:52/12	\$7,909.00
<b>Single Speed, 240V, Non-Fused, Nema 3R Enclosures, W/O Panel Switch</b>			
MPSD-30-R-NF:52/12	\$5,223.00	MPSDE-30-R-NF:52/12	\$5,475.00
MPSD-60-R-NF:52/12	\$6,064.00	MPSDE-60-R-NF:52/12	\$8,094.00
<b>Single Speed, 240V, Fused, Nema 3R Enclosures, W/ Panel Switch</b>			
MPSD-30-R-S:52/12	\$6,309.00	MPSDE-30-R-S:52/12	\$6,130.00
MPSD-60-R-S:52/12	\$8,615.00	MPSDE-60-R-S:52/12	\$8,309.00
<b>Single Speed, 240V, Non-Fused, Nema 3R Enclosures, W/O Panel Switch</b>			
MPSD-30-R-S-NF:52/12	\$7,493.00	MPSDE-30-R-S-NF:52/12	\$7,068.00
MPSD-60-R-S-NF:52/12	\$8,418.00	MPSDE-60-R-S-NF:52/12	\$8,094.00
<b>Two Speed, 240V, Fused, Nema 3R Enclosures, W/ Panel Switch</b>			
MPSD2-30-R-S:52/12	\$12,600.00	MPSDE2-30-R-S:52/12	\$12,522.00
MPSD2-60-R-S:52/12	\$17,762.00	MPSDE2-60-R-S:52/12	\$18,732.00

<b>Options Available: add to base price</b>		<b>Suffix</b>	<b>Price</b>	
GFCI - Heavy Duty Commercial Receptacle w/ In Use Cover		G	\$290.00	
Lightning Sure Arrestor (3 Wire)		A	\$281.00	
MX-1.500-SA (priced p/each - 2 required per pedestal)			\$159.00	
45 Degree Fixed Bracket w/ Hardware (priced p/each - 4 required per pedestal)			\$82.00	
Structurally Attached Mounting Kit		SAPD	\$174.00	
<b>Options available based on Amperage</b>		<b>Suffix</b>	<b>30amp</b>	<b>60amp</b>
Upper Deck Cap		D	\$277.00	\$282.00
5' Termination Cable - Liquid tight flex conduit (3 Wire w/ Ground)		5C	\$167.00	\$242.00
5' Termination Cable - Liquid tight flex conduit (6 Wire w/ Ground)		5C6	\$166.00	\$242.00
10' Termination Cable - Liquid tight flex conduit (3 Wire w/ Ground)		10C	\$205.00	\$316.00
10' Termination Cable - Liquid tight flex conduit (6 Wire w/ Ground)		10C6	\$328.00	\$443.00
Additional Flex Conduit for Line Below Roof		BRC	\$65.00	\$91.00
Extended lengths for above or below roofline - 6" increments (Specify in model number)		xx/yy	\$76.00	\$90.00
Add Square D Neutral Bar Assembly		2X - 3X 3Z - 4Z	\$118.00	\$163.00
Add Eaton Neutral Bar Assembly		2X - 3X 3Z - 4Z	\$125.00	\$248.00



**Support Accessories**

**SS Clamp w/ Rubber Grommet, Removable EPDM grommet allows clamp to accommodate increased pipe size; Available for a limited time only.**



Part Number		Unit Price
00941	5/8 SS Clamps w/ Rubber Grommet	\$3.00
00942	7/8 SS Clamp w/ Rubber Grommet	\$3.00
00943	1 1/8 SS Clamp w/ Rubber Grommet	\$3.00
00946	2 1/8 SS Clamp w/ Rubber Grommet	\$5.00

**Snap-N-Strut Clamps-UL listed nylon clamps for strut applications/threaded for 3/8" ATR. Price is per unit. Package quantities of 10 pieces. Refer to product catalog for appropriate sizing**



Part Number	Clamp Size	Unit Price	Part Number	Clamp Size	Unit Price
00958	12-16	\$4.36	58153	40-44	\$5.00
00959	17-20	\$4.00	58154	48-54	\$5.00
58150	21-24	\$4.00	58155	56-63	\$7.00
58151	25-29	\$5.00	00968	66-76	\$8.00
58152	30-34	\$5.00	00969	79-93	\$20.00
00964	35-38	\$5.45	00970	101-115	\$31.00
00960	Strut Nut	\$101.00			



Adjustable Assemblies-Nylon SNS Clamp on 3/8" ATR w/ strut nut for use with strut and bridging systems. Available 5" or 9" Height.	5" Adj Height	Unit Price	9" Adj Height	Unit Price
	MS-AA5-1216	\$8.00	MS-AA9-1216	\$10.00
	MS-AA5-2124	\$8.00	MS-AA9-2124	\$10.00
	MS-AA5-2529	\$8.00	MS-AA9-2529	\$12.00
	MS-AA5-3034	\$10.00	MS-AA9-3034	\$12.00
Price is p/unit, Package quantities of 10 Pieces. Without Strut Nut deduct 0.75 per Unit.	MS-AA5-3538	\$12.00	MS-AA9-3538	\$12.00
	MS-AA5-4044	\$12.00	MS-AA9-4044	\$13.00
	MS-AA5-4854	\$12.00	MS-AA9-4854	\$13.00

**Adjustable Roller Assemblies used with Bridging Systems**



Model	Description	Unit Price
MS-3-A5	3" Adjustable Roller Assembly W/ 5" SS ATR	\$21.00
MS-5-A5	5" Adjustable Roller Assembly W/5" SS ATR	\$25.00
MS-8-A5	8" Adjustable Roller Assembly W/5" SS ATR	\$40.00
MS-10-A5	10" Adjustable Roller Assembly W/5" SS ATR	\$41.00

**Fixed Height Roller Assemblies used with Bridging Systems**



Model	Description	Unit Price
MS-5-FH	5" Roller Assembly, Fixed Height	\$58.00
MS-8-FH	8" Fixed Height Roller Assembly	\$69.00
MS-10-FH	10" Fixed Height Roller Assembly	\$72.00

**Stainless Steel Pipe Strap**



Model	Dimensions	Description	Unit Price
MPS-7	1/2" x 7"	For use with MT-1V	\$3.00
MPS-11	3/4" x 11"	For use with MT Series & MS-2.5RA7	\$4.00
MPS-14	1" x 14"	For use with MS-3 and MS-4 series.	\$7.00
MPS-17	1 1/4" x 17"	For use with MS-5 all series.	\$10.00
MPS-26	1 1/4" x 26"	For use with MX-8 all series.	\$14.00
MPS-32	1 1/4" x 32"	For use with MX-10 all series.	\$16.00



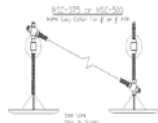
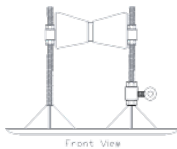


**Support Accessories**

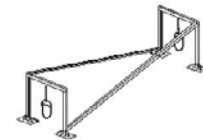
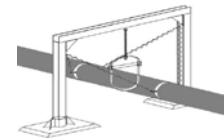


**Walk Pads-1/2" thick 100% recycled rubber pad- Price is per unit**

Model	Description	Unit Price
MWP812	For use w/ all supports utilizing: MT-2RF4, MT-2RA6, MT-8SF4 and MT-8SA6	\$10.00
MWP914	For use w/ all supports utilizing:MS-10SA10, 10SA14, 2HA12, 4RF3, 2.5RA7, 3RA7, 3RA12, 4RA7, 4RA10	\$13.00
MWP1010	For use w/ all supports utilizing: MT-1 base	\$12.00
MWP1016	For use w/ all supports utilizing standard or heavy-duty:MS-12SF4, 12SA1, 12SA10, 12SA14, 3HA16, 5RA7, 5RA10, MX-5RA6, RA14, 12SA6, 17SA14	\$17.00
MWP1020	For use w/ all supports utilizing standard or heavy-duty:MX-6RA6, MX6RA14	\$18.00
MWP1212	For use w/ all supports utilizing: MS-1 base	\$13.00
MWP1220	For use w/ all supports utilizing heavy-duty: MB815	\$21.00
MWP1222	For use w/ all supports utilizing: MX-18SA6, 18SA18, 2HA18, 3HA18, 4HA18, 8RA6, 8RA18,	\$22.00
MWP1224	For use w/ all supports utilizing: MX-20SA6, MX-20SA18, 10RA6, 10RA18	\$22.00
MWP1414	For use w/ all supports utilizing: MB-1010 base	\$18.00
MWP1820	For use w/ all supports utilizing: MB-1416 base	\$38.00
MWP2020	For use w/ all supports utilizing: MB-1616 base	\$38.00
MWP2424	For use w/ all supports utilizing: MB-2020 base	\$45.00
E-6000 Adhesive	Silicone mastic for securing support base to MWP series walk pad	\$25.00



Model	Description	Price
MSC-375	Support Bracing for 3/8" ATR Supports - Less 12 ft 1/2" ATR	\$18.00
MSC-375	Support Bracing for 3/8" ATR Supports - W/ 12 ft 1/2" ATR	\$107.00
MSC-500	Support Bracing for 1/2" ATR Supports - Less 12 ft 1/2" ATR	\$21.00
MSC-500	Support Bracing for 1/2" ATR Supports - W/ 12 ft 1/2" ATR	\$109.00
12 ft Strut Cross Bracing W/ Hardware (Each)	Recommended for all Galv. Supports where H > 40	\$107.00
15 ft Strut Cross Bracing W/ Hardware (Each)	Recommended for all Galv. Supports where H > 60	\$116.00



**Structurally Attached Anchoring Systems**

Model	Description	Unit Price
MX-1.375-SA-4-6	Single Post Curbed Anchoring Base Support w/ 3/8" ATR	\$126.00
MX-1.500-SA-4-6	Single Post Curbed Anchoring Base Support w/ 1/2" ATR	\$159.00
MX-1.750-SA-4-6	Single Post Curbed Anchoring Base Support w/ 3/4" ATR	\$175.00



Please contact factory for additional information on complete Structurally Attached Tie Down Assembly options .



**ISIMET / MAPA, LLC**

Copyright © 2021 ISIMET / MAPA, LLC

MAPA Products is a Trade Name of ISIMET / MAPA, LLC, an affiliate of WCM Industries. This document is copyrighted. This document may not in whole or part, be copied, duplicated, reproduced, translated, electronically stored, or reduced to machine readable form without prior written consent from **ISIMET / MAPA, LLC**.

Although the material contained herein has been carefully reviewed, **ISIMET / MAPA, LLC** does not warrant it to be free of errors or omissions. **ISIMET / MAPA, LLC** reserves the right to make corrections, updates, revisions, or changes to the information contained herein.

Printed in the United States of America