



**NEXT DAY**



**CUSTOM**

A perfect drain in a  
not-so-perfect world.

**ID** Infinity Drain®

Next Day Custom Program & Pricing • February 1, 2021

ORDERS AND SIGN OFF IN BY 10 AM ET, SHIP NEXT DAY

# Next Day Custom: Exactly wall-to-wall, flush against the wall™

Infinity Drain's Next Day Custom program is the first of its kind to make perfect linear drain wall-to-wall installation a reality – without the wait.

Next Day Custom Linear Drains are available in lengths up to 72" in two finishes, three grate styles and for all installation waterproofing methods.

- Purchase orders and sign offs received by 10am ET will ship the following day with no additional rush upcharge
- Available on linear drains up to 72" in length
- Custom outlet placement or multiple outlets along channel run
- Finishes: Satin Stainless Steel or Polished Stainless Steel
- Grate Styles: Wedge Wire, Offset Slotted, Tile Insert Frame
- Installation Types: FX Series, FF Series, FCB Series, FCS Series
- Limit 1 item (complete kit – channel and grate) per purchase order number
- Program is in addition to Infinity Drain's current 15-day custom lead-time or custom rush 5-day upcharge solutions

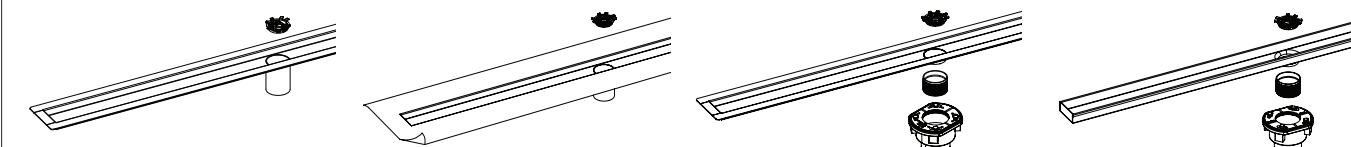
### 1. Choose Grate Style

|  |   |  |  |
|--|---|--|--|
| <input type="checkbox"/> 2 MM WEDGE WIRE | <input type="checkbox"/> OFFSET SLOTTED | <input type="checkbox"/> TILE INSERT FRAME | <input type="checkbox"/> NO GRATE (CHANNEL ONLY) |
|--|---|--|--|



### 2. Choose Channel

|  |  |   |   |
|--|--|---|---|
| <input type="checkbox"/> [FF] Fixed Flange<br>2" No Hub Outlet | <input type="checkbox"/> [FCS] Flange with Kerdi<br>Factory applied KERDI - 2" No Hub Outlet | <input type="checkbox"/> [FCB] Double Waterproofing<br>2" Threaded Outlet | <input type="checkbox"/> [FX] Fixed Length*<br>2" Threaded Outlet |
|--|--|---|---|

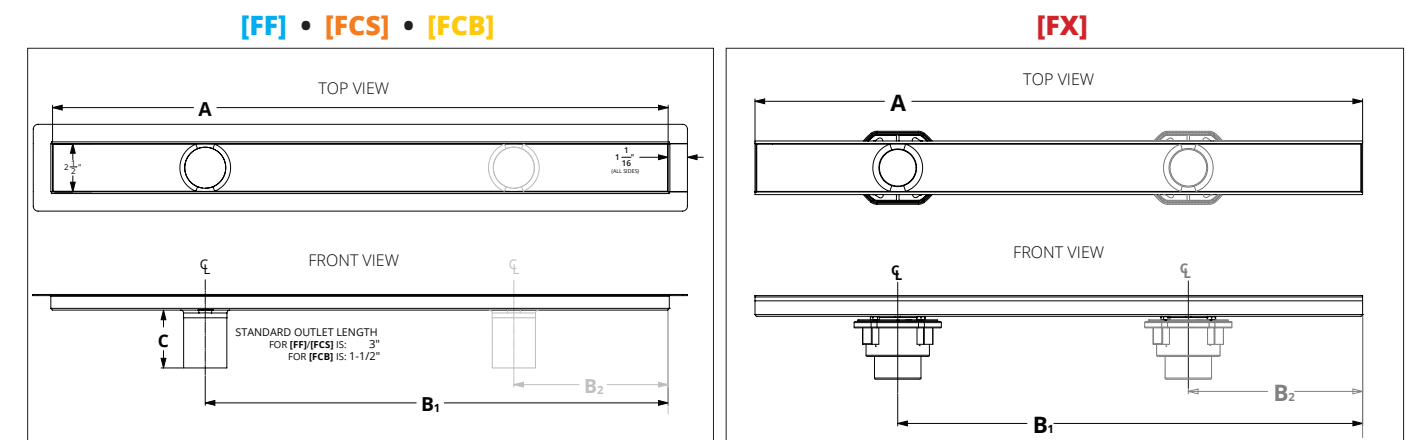


### 3. Choose Finish

|  |   |
|--|---|
| <input type="checkbox"/> SATIN STAINLESS | <input type="checkbox"/> POLISHED STAINLESS |
|--|---|

### 4. Choose Length & Outlet Location(s)

| A: Overall Inside Length (FF, FCB, FCS)<br>A: Overall Length (FX) | B1: Outlet Location 1    | B2: Outlet Location 2    |
|---|--------------------------|--------------------------|
| <input type="checkbox"/>  | <input type="checkbox"/> | <input type="checkbox"/> |
| <small>FOR ADDITIONAL OUTLET IF NEEDED</small>                    |                          |                          |



### 5. Choose Shipping Method

|                                 |   |   |
|---------------------------------|---|---|
| <input type="checkbox"/> Ground | <input type="checkbox"/> Standard Overnight | <input type="checkbox"/> Priority Overnight (AM Delivery) |
|---------------------------------|---|---|

### 6. Sign & Reference

By signing this form, you are agreeing to the terms and conditions herein. All details and finished stated are correct. All dimensions are correct and are to be held within a tolerance of +/- 1/16". All other details and dimensions that are specified as "standard" are subject to manufacturer's tolerance and change without notice. We can assume no responsibility for use of superceded or void data. All custom orders are non-cancellable, non-returnable and non-refundable. When completed send to orders@infinitydrain.com. All prices in US dollars.

Infinity Drain  
145 Dixon Avenue  
Amityville, NY 11701  
Phone: 516.767.6786  
Fax: 516.740.3066  
www.Infinitydrain.com



|                 |                                       |  |
|-----------------|---------------------------------------|--|
| <b>APPROVAL</b> | NAME<br><input type="checkbox"/>      | PO #/REFERENCE<br><input type="checkbox"/> |
|                 | SIGNATURE<br><input type="checkbox"/> | DATE<br><input type="checkbox"/>           |

**SA 65**

Wedge Wire



| 0-36" Model                             | List   | 37-48" Model                             | List   | 49-60" Model                             | List   | 61-72" Model                       | List   |
|---|--------|--|--------|--|--------|------------------------------------|--------|
| SA 65C 0-36 SS                          | \$855  | SA 65C 37-48 SS                          | \$1095 | SA 65C 49-60 SS                          | \$1290 | SA 65C 61-72 SS                    | \$1450 |
| SA 65C 0-36 PS                          | \$1085 | SA 65C 37-48 PS                          | \$1270 | SA 65C 49-60 PS                          | \$1520 | SA 65C 61-72 PS                    | \$1815 |
| For custom lengths from 0" to 36-15/16" |        | For custom lengths from 37" to 48-15/16" |        | For custom lengths from 49" to 60-15/16" |        | For custom lengths from 61" to 72" |        |

**KA 65**

Offset Slotted



| 0-36" Model                             | List  | 37-48" Model                             | List  | 49-60" Model                             | List  | 61-72" Model                       | List   |
|---|-------|--|-------|--|-------|------------------------------------|--------|
| KA 65C 0-36 SS                          | \$340 | KA 65C 37-48 SS                          | \$450 | KA 65C 49-60 SS                          | \$630 | KA 65C 61-72 SS                    | \$675  |
| KA 65C 0-36 PS                          | \$505 | KA 65C 37-48 PS                          | \$675 | KA 65C 49-60 PS                          | \$910 | KA 65C 61-72 PS                    | \$1010 |
| For custom lengths from 0" to 36-15/16" |       | For custom lengths from 37" to 48-15/16" |       | For custom lengths from 49" to 60-15/16" |       | For custom lengths from 61" to 72" |        |

**RA 65**

Tile Insert

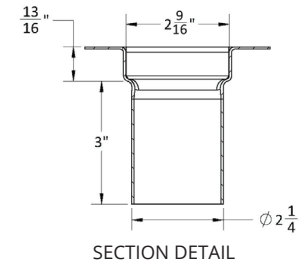


| 0-36" Model                             | List  | 37-48" Model                             | List   | 49-60" Model                             | List   | 61-72" Model                       | List   |
|---|-------|--|--------|--|--------|------------------------------------|--------|
| RA 65C 0-36 SS                          | \$780 | RA 65C 37-48 SS                          | \$1005 | RA 65C 49-60 SS                          | \$1255 | RA 65C 61-72 SS                    | \$1505 |
| RA 65C 0-36 PS                          | \$820 | RA 65C 37-48 PS                          | \$1060 | RA 65C 49-60 PS                          | \$1310 | RA 65C 61-72 PS                    | \$1565 |
| For custom lengths from 0" to 36-15/16" |       | For custom lengths from 37" to 48-15/16" |        | For custom lengths from 49" to 60-15/16" |        | For custom lengths from 61" to 72" |        |

**[FF]**

Fixed Flanged Channel

| Specifications    |                      |
|-------------------|----------------------|
| Channel Material: | 304L Stainless Steel |
| Overall Width:    | 4 1/2"               |
| Inside Width:     | 2 9/16"              |
| Flow Rate:        | 9 GPM                |

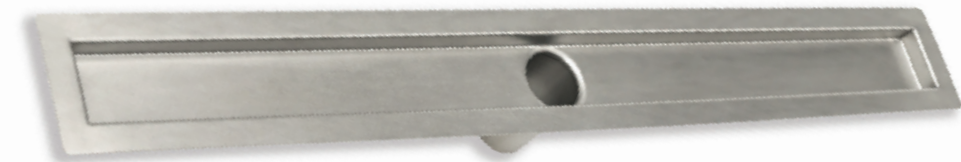


Waterproofing:

- Liquid Membrane
- Fabric Sheet



**[FF]** (Flanged) linear drains are designed for use with liquid applied (cold fluid applied) or fabric sheet membranes. To measure for Step 4 on the Next Day Custom Form: The overall inside length of channel (**A**) is the finished length of the drain, with a 1-1/16" flange on all four sides to accept the waterproofing membrane. All outlet locations (**B**) are measured from the right inside channel edge. For this type of installation a mortar bed or equal is created up to and around the drain with the appropriate slope towards the drain. The waterproofing is applied over the mortar bed and the flange of the channel. Tile or stone is applied directly to the waterproofing for a low profile installation. The standard FC channel is provided with a 2" No-Hub Outlet.

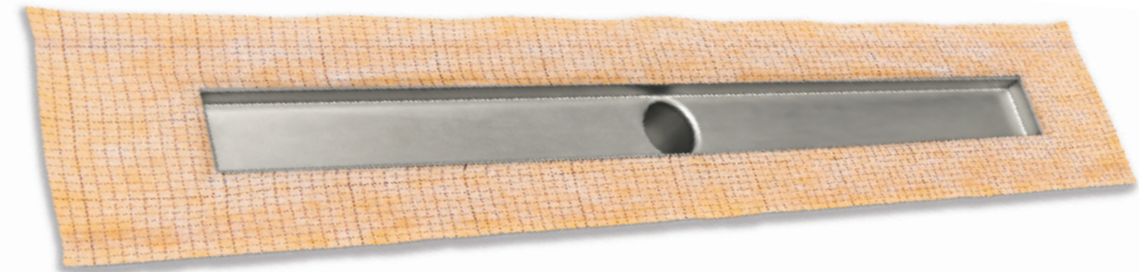


| 0-36" Model                             | List  | 37-48" Model                             | List  | 49-60" Model                             | List  | 61-72" Model                       | List  |
|---|-------|--|-------|--|-------|------------------------------------|-------|
| FC 65C 0-36 SS                          | \$570 | FC 65C 37-48 SS                          | \$605 | FC 65C 49-60 SS                          | \$630 | FC 65C 61-72 SS                    | \$660 |
| For custom lengths from 0" to 36-15/16" |       | For custom lengths from 37" to 48-15/16" |       | For custom lengths from 49" to 60-15/16" |       | For custom lengths from 61" to 72" |       |

**[FCS]**

Fixed Flanged Channel with Schluter® - KERDI Fabric

**[FCS]** for Schluter® KERDI Waterproofing - Comes with KERDI membrane factory applied to the channel for use with the Schluter KERDI system only. Uses a 2" No-Hub Outlet. To measure for Step 4 on the Next Day Custom Form reference length of channel (**A**) and outlet locations (**B**) above.

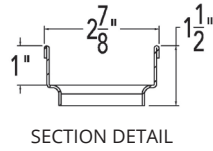


| 0-36" Model                             | List  | 37-48" Model                             | List  | 49-60" Model                             | List  | 61-72" Model                       | List   |
|---|-------|--|-------|--|-------|------------------------------------|--------|
| FCS 65C 0-36 SS                         | \$690 | FCS 65C 37-48 SS                         | \$800 | FCS 65C 49-60 SS                         | \$905 | FCS 65C 61-72 SS                   | \$1015 |
| For custom lengths from 0" to 36-15/16" |       | For custom lengths from 37" to 48-15/16" |       | For custom lengths from 49" to 60-15/16" |       | For custom lengths from 61" to 72" |        |

[FX]

Fixed Length

| Specifications    |                      |
|-------------------|----------------------|
| Channel Material: | 304L Stainless Steel |
| Overall Width:    | 4 1/2"               |
| Inside Width:     | 2 9/16"              |
| Flow Rate:        | 9 GPM                |



Waterproofing via clamping floor drain:

- Copper Pan
- Hot Mop
- PVC Liner
- Fiberglass
- Lead Pan
- Rubber Liner

[FX] (Fixed Length) linear drains are designed for use with traditional waterproofing methods including PVC Liners, Rubber Liners, Hot Mop, Lead Pan, Copper Pan and Fiberglass. To measure for Step 4 on the Next Day Custom Form: The overall length of the channel (A) is the finished length of the drain, which is the outside dimension. All outlet locations (B) are measured from the right outside edge. For this installation a mechanically fastening drain body (clamp down drain) must be installed. An initial mortar bed or equal is spread across the shower area and sloped in all directions towards the clamp down drain body. A waterproofing membrane is installed with the drain body and over the mortar bed. The linear drain is threaded into the drain body and set to the correct height. A final layer of mortar is spread to encase the linear drain and is spread across the shower floor with a slope to the drain. Tile or stone is applied to the final mortar bed.

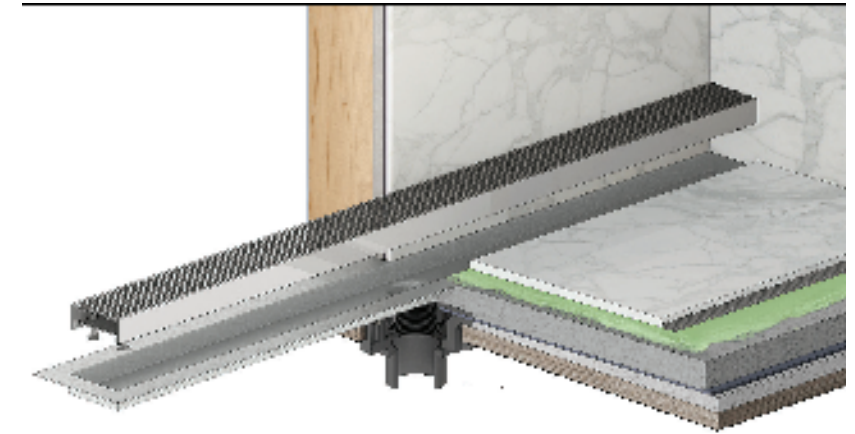
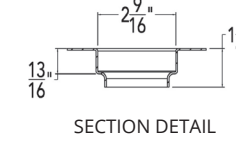


| 0-36" Model                             | List  | 37-48" Model                             | List  | 49-60" Model                             | List  | 61-72" Model                       | List  |
|---|-------|--|-------|--|-------|------------------------------------|-------|
| XC 65C 0-36 SS                          | \$430 | XC 65C 37-48 SS                          | \$480 | XC 65C 49-60 SS                          | \$575 | XC 65C 61-72 SS                    | \$675 |
| XC 65C 0-36 PS                          | \$500 | XC 65C 37-48 PS                          | \$560 | XC 65C 49-60 PS                          | \$640 | XC 65C 61-72 PS                    | \$715 |
| For custom lengths from 0" to 36-15/16" |       | For custom lengths from 37" to 48-15/16" |       | For custom lengths from 49" to 60-15/16" |       | For custom lengths from 61" to 72" |       |

[FCB]

Double Waterproofing

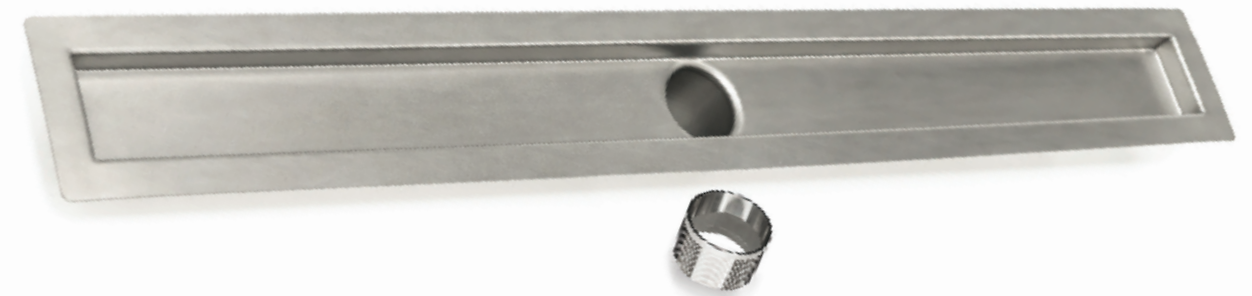
| Specifications    |                      |
|-------------------|----------------------|
| Channel Material: | 304L Stainless Steel |
| Overall Width:    | 4 1/2"               |
| Inside Width:     | 2 9/16"              |
| Flow Rate:        | 9 GPM                |



Double Waterproofing via clamping floor drain:

- Copper Pan
- Hot Mop
- PVC Liner
- Fiberglass
- Lead Pan
- Rubber Liner
- AND
- Liquid Membrane
- Fabric Sheet

[FCB] for Double Waterproofing - Comes with a 2" threaded outlet for use with a clamping drain body and a traditional membrane as a primary waterproofing and has the standard 1-1/16" flange for a liquid/fabric secondary waterproofing. To measure for Step 4 on the Next Day Custom Form: The overall inside length of channel (A) is the finished length of the drain. All outlet locations (B) are measured from the right inside channel edge. A mortar bed or equal is spread across the shower area and sloped in all directions towards the clamp down drain body. A waterproofing membrane is installed with the drain body and over the mortar bed. The linear drain is threaded into the drain body and set to the correct height. A final layer of mortar is spread to encase the linear drain and is spread across the shower floor with a slope to the drain. The secondary waterproofing is applied over the mortar bed and the flange of the channel. Tile or stone is applied directly to the waterproofing.



| 0-36" Model                             | List  | 37-48" Model                             | List  | 49-60" Model                             | List  | 61-72" Model                       | List  |
|---|-------|--|-------|--|-------|------------------------------------|-------|
| FCB 65C 0-36 SS                         | \$630 | FCB 65C 37-48 SS                         | \$665 | FCB 65C 49-60 SS                         | \$795 | FCB 65C 61-72 SS                   | \$920 |
| For custom lengths from 0" to 36-15/16" |       | For custom lengths from 37" to 48-15/16" |       | For custom lengths from 49" to 60-15/16" |       | For custom lengths from 61" to 72" |       |



**ID** Infinity Drain®

145 Dixon Avenue, Amityville, New York 11701

Phone 516.767.6786 ~ Fax 516.740.3066 ~ [orders@infinitydrain.com](mailto:orders@infinitydrain.com)

[www.infinitydrain.com](http://www.infinitydrain.com)

**LT014-02-21**



Infinity Drain is made in the USA

